



# **CHECKMATE CUBES**

Engineering | Construction | Management

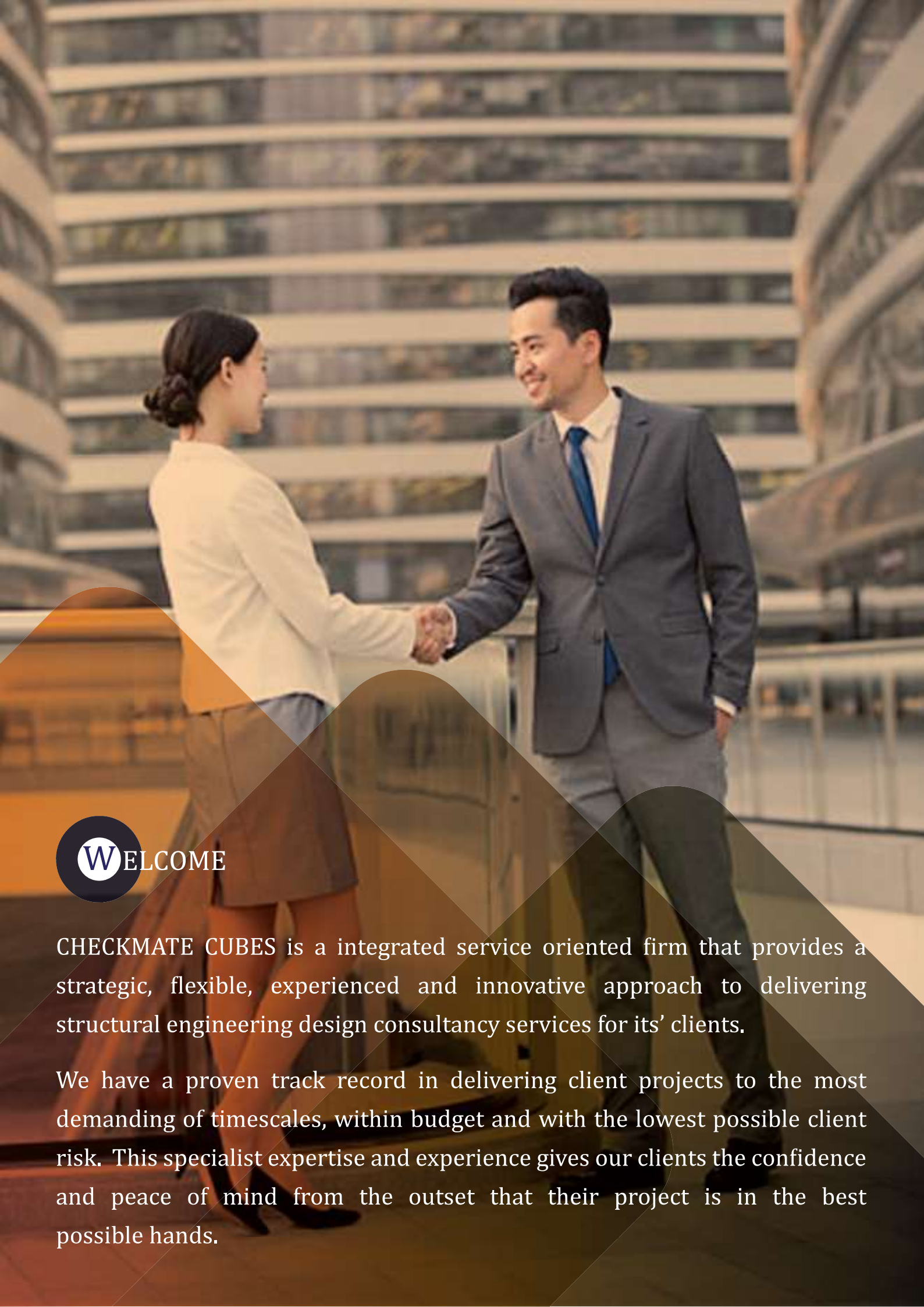


#191, 2nd floor, Service road, West of Chord road,  
2nd Stage, Mahalakshmi Layout, Bengaluru - 560 086  
+91 6363 288 372 | [info@checkmatecubes.com](mailto:info@checkmatecubes.com)  
[www.checkmatecubes.com](http://www.checkmatecubes.com)



BUSINESS PROFILE

STRUCTURAL ENGINEERING



CHECKMATE CUBES is a integrated service oriented firm that provides a strategic, flexible, experienced and innovative approach to delivering structural engineering design consultancy services for its' clients.

We have a proven track record in delivering client projects to the most demanding of timescales, within budget and with the lowest possible client risk. This specialist expertise and experience gives our clients the confidence and peace of mind from the outset that their project is in the best possible hands.

## COMPANY PROFILE

---

All our projects are led by highly experienced Managing Directors and a team with a passion for delivering high quality engineering solutions alongside an excellent level of service. As part of this approach, we focus on designing out systems rather than designing in complex and expensive kit and in seeking to balance the up-front capital cost of equipment and services against the associated life cycle costs of operating the building and provide options based on specific requirements.

Our approach embodies the maximum possible contribution from each of the three pillars of environmental, economic and social sustainability from scratch to craft.

We use our expertise of engineering knowledge on a bespoke basis to maximize environmental and economic sustainability and design in accessibility for all sections of society. These enhance the role buildings play in sustainable local communities.

In summary, we believe our technical, engineering approach and passion for delivering the highest levels of clients' service sets us apart from other consultants and consistently delivers considerable added value to any project.



## MEET OUR GROUP



**Manjunath Guttedar** M.Tech. (Structures)

**Technical Advisor**

Having strong technical knowledge background, he has handled many number of projects so far. With the 10+ years of experience, he has encountered numerous challenges. Being expertise in the RCC and industrial steel structures with the software skills made him easier



**Rakesh S** M.Tech. (Structures)

**Chartered engineer / Managing Partner**

Leads the company by ensuring all employees work for the company vision and he sets the overall strategic direction of the company alongside the board. His vision is to plan and implement long term business strategies to achieve the company's objectives.



**Sandeep Nagendra** M.Tech. (CAD Structures)

**Chief Structural Engineer / Managing Partner**

The knowledge in engineering concepts he has, and with this structural software skills, he designs the structure economically and to architectural demands. With his experience in the field of RCC and Industrial Steel Structures, he provides the innovation solutions to practical impossibles.



**Mahadev Kuppe**

**Project Manager / Managing Partner**

He maintains and monitors project plans, project schedules, work hours, budgets and expenditures. And he ensures the projects adhere to frameworks and all documentation is maintained appropriately for each project. He also assess project risks and issues and provide solutions where applicable.

# WHY CHOOSE US ?

We adopt a collaborative approach working with the client, interested stakeholders and the building design team to define a clear brief, which sets out the aims and objectives of the project and a programme and budget that is site specific and realistic. Our approach is to achieve the best balance of quality, cost, function, efficiency, maintainability and project delivery.



## Quality

We implement a 'zero-defects' policy at every stages of work and detail the same for better understanding even for a common person to ensure the client gets the best possible project outcome.



## Personnel

With early and close collaboration with the design team allows an overall design strategy to be developed and re-defined to reflect the whole structural design to add value to the project.



## Innovation

As our structural engineers involve themselves in R&D of the project assigned, they come-up with an innovative ways to design the structure for the better understanding of the complex projects.



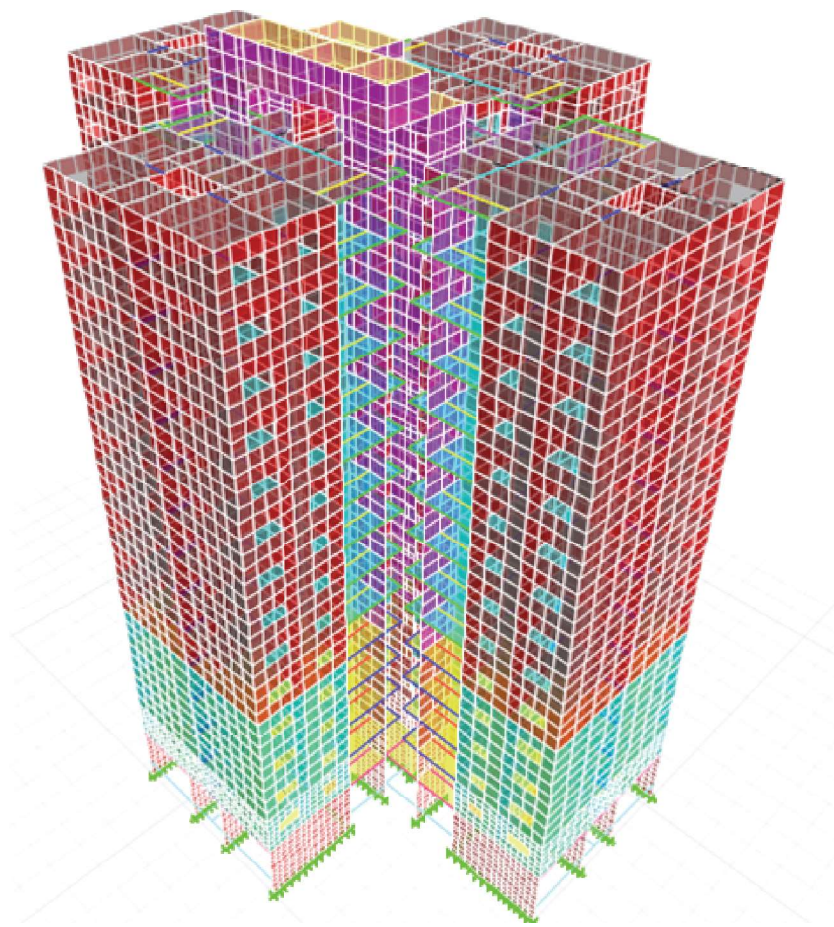
## Commitment

Keeping the client/s and relevant team updated through the project and to deliver the project within the stipulated tenure discussed and agreed with the client/s is our ultimate motto.

# SECTOR EXPERTISE

Our Structural Engineers who designs the bones and muscles that create the form and shape of man-made structures. They analyse, design, plan and research structural components and structural systems to achieve design goals and ensure the safety and comfort of users.

Our distinguished structural engineers are expertise in their own domain of designs such as RCC structures, Industrial steel structures, pre-cast structures, bridges and culverts.



## Our Vision

- Project creativity
- Efficiency
- Toughest challenges
- Innovative solutions
- Quality project delivery
- Client relationships



## Our Mission

- Delivering exceptional design and execution of engineering quality services to our clients
- Maintaining the highest level of passion, professional ethics, integrity with our best expertise.
- Developing and nurturing long-standing client relationships



# OUR SERVICES

At CHECKMATE CUBES, we constantly push the boundaries to meet the high expectations of our clients. Our expertise allows architects to realize their aesthetic visions, while our clients meet their commercial and operational goals. We have a long history of innovation, as well as a reputation for imaginative thinking coupled with common sense solutions. The buildings we engineer perform well throughout their lifetime and make a positive contribution to society and the environment.

## Concrete Structures

- Residential structures
- Education/Institutional structures
- Mivan Structures
- Silo/Machine foundations
- Commercial structures
- High rised structures
- Pre-cast concrete structures
- Retro-fitting



Villa at JP Nagar



Villa at JP Nagar



Commercial complex at Brookefield



# OUR SERVICES

## Steel Structures

- Industrial Structures
- Equipment support structures
- Pre-Engineered Buildings (PEB)
- Composite structures



Warehouse at Yalahanka



Warehouse at Kumbalagodu

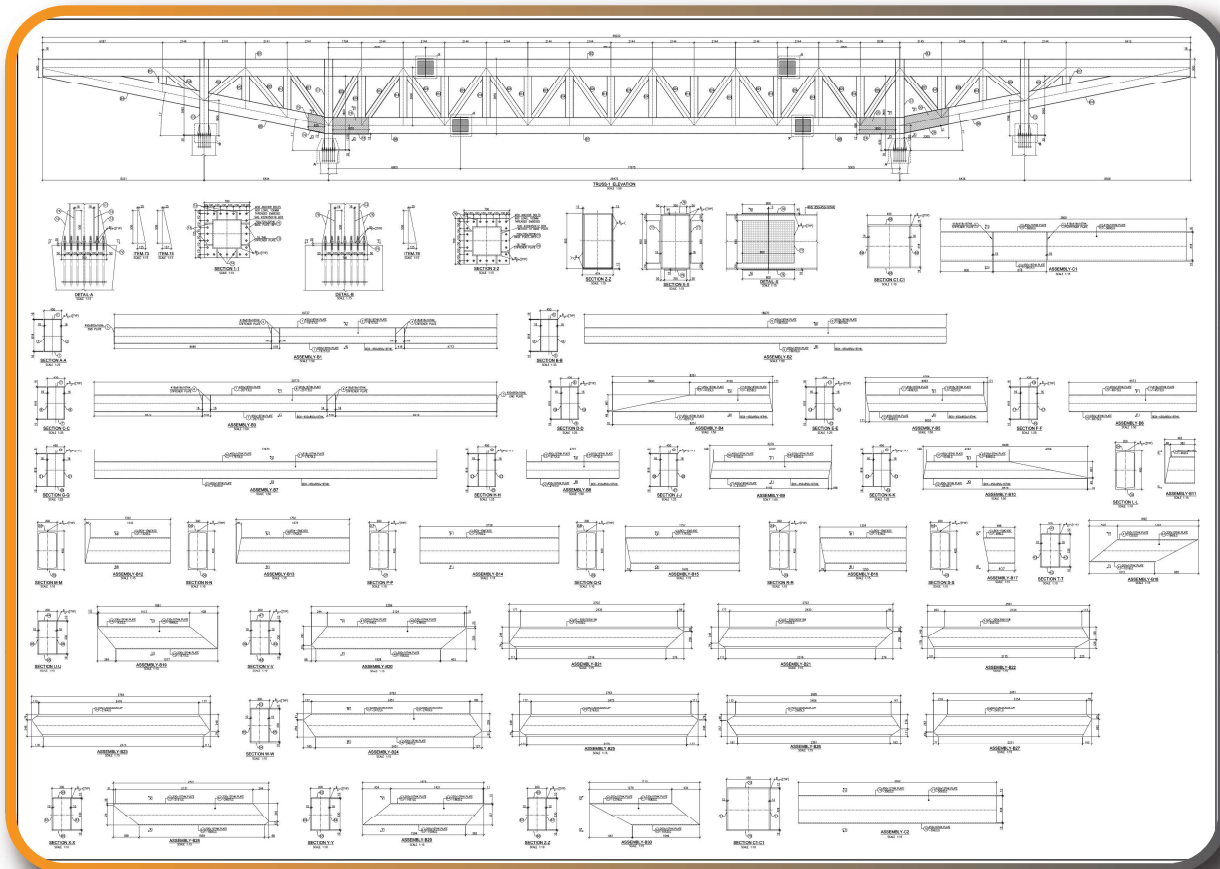


Residence at Chikkabanavara

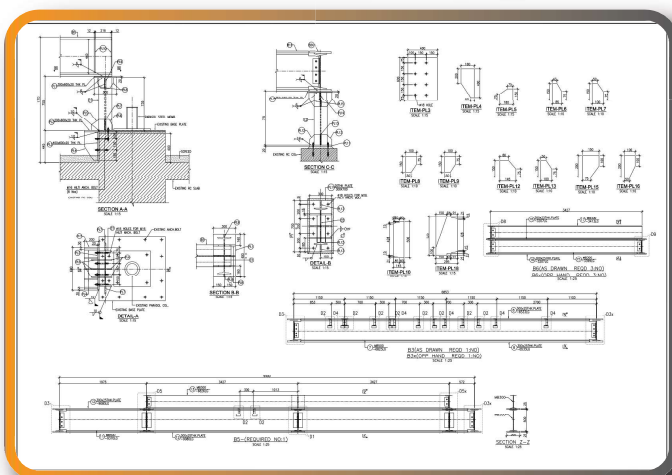
# OUR SERVICES

## Structural detailed drawings

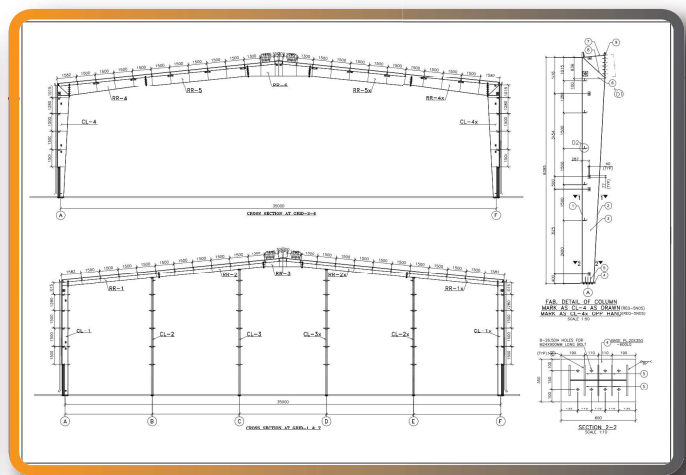
- Structural steel detailing (shop drawing)
- Builder's work drawings
- Record drawings
- Bar bending schedule (BBS)
- Connection details for steel trusses
- Schematic drawings
- Installation drawings



Falcon City Auditorium at Konanakunte cross



SAP at Whitefield



PEB Warehouse at Nelamangala



## CONTACT US



#191, 2nd floor, Service road, West of Chord road,  
2nd Stage, Mahalakshmi Layout, Bengaluru - 560 086



+91 6363 288 372



info@checkmatecubes.com



www.checkmatecubes.com

